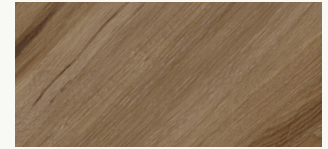


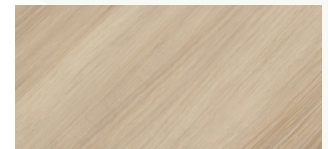
HEARTLAND FLOORING SPECIFICATIONS

PRODUCT INFORMATION

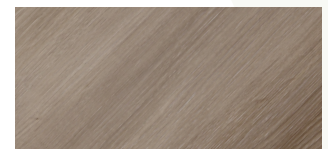
CONSTRUCTION	Foamed Luxury SPC Core / 28mil (0.7mm) Wear Layer
PLANK DIMENSIONS	6mm + 1mm IXPE Attached Pad Thickness x 9" Width x 60" Length
MILLING	4 sided Painted-Bevel Edge / Uniclic® Locking System
FINISH	5% Sheen / Textured / Aluminer+™
COLOR VARIANCE	Medium
INSTALLATION	Float or Glue. Radiant floor heating compatible. Above, on, or below grade.
ENVIRONMENTAL	FloorScore® Certified / 100% Virgin PVC
WATER PERFORMANCE	100% waterproof and safe to install in full bathrooms, laundry rooms, and mudrooms.



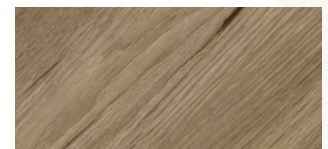
MADISON 55680



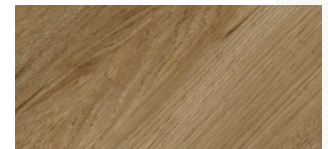
SPRINGFIELD 55681



ROCKFORD 55682



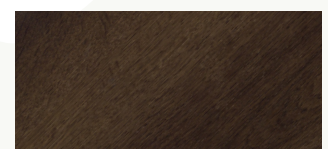
JOLIET 55683



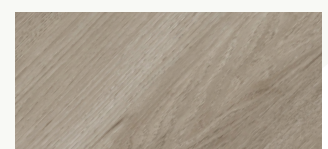
PEORIA 55684



DECATUR 55685



BLOOMINGTON 55686



BRANSON 55687

PACKAGING

BOX WEIGHT:	SQFT PER BOX: 30.17	BOX DIMENSIONS:
PLANKS PER BOX: 8	PACK SIZE: 36 Boxes/Pallet	PALLET DIMENSIONS:

WARRANTY

FINISH	Lifetime Residential / 25-Year Light Commercial
STRUCTURE	Lifetime Structural Warranty

RESOURCES

Download the latest versions of our installation and maintenance guides, as well as watch installation videos, at www.bhwfloors.com

ALUMINER+™

Our signature Aluminer+™ finish is a proprietary combination of aluminum oxide and silicone carbide making this the most durable finish available. We stand behind our finish by offering a Lifetime Residential wear through warranty.

