

Installation Guidelines

Wood Veneer on SPC Rigid Core (WSPC)

Our flooring products come with a Lifetime Structural (Residential) Warranty/ 50-Year Residential Finish Manufacturer Warranty/ 15-Year Light Commercial Finish Warranty. The warranty applies to the original purchaser of the flooring only and guarantees that the surface will not wear-through or peel off for the duration of the warranty. Installation of the product confirms your acceptance of the product. Failure to follow Pre-Installation and Installation guidelines will void the manufacturer's warranty. The warranty does not cover damage from improper use, care, maintenance or installation, including scratching, exposure to moisture and humidity, water damage, denting, telegraphing, fading, or staining. WSPC is formatted to withstand topical spills for up to 72 hours without harm. These products are water-resistant when exposed to topical water for up to 72 hours. We guarantee topical spills will not leak through the joints or edges and the product will not swell, buckle, cup, crack or lose integrity throughout the allotted 72 hour duration. In the case of standing water or flooding, this flooring will not act as a waterproofing barrier for the subfloor and/or any surrounding structure. Any damage to the subfloor and/or surrounding structure that is caused by standing water or flooding is not covered by this limited warranty. For interior household use only. All maintenance instructions must be followed. Please review our warranty coverage information for specific terms and conditions.

PLEASE READ CAREFULLY BEFORE INSTALLING

Thoroughly examine the flooring prior to installation for grade, color, finish and quality. Ensure adequate lighting for proper inspection. If flooring is not acceptable, do not install the floor. Please contact the seller immediately and arrange for replacement. Industry standard allows up to 5% of material may be culled for blemishes or defects without being considered defective. Please note our products contain a standard pattern variation and installers should be working from multiple open boxes to ensure boards are blended throughout. The manufacturer cannot accept responsibility for installation of flooring with visible defects. Installation of this product warrants the acceptance by the installer or owner for the quality of the material, as well as conditions in which the material is being installed therein.

It is the Installer/Owner responsibility to ensure that the conditions are acceptable prior to the installation of the flooring. The manufacturer declines any and all problems associated with the flooring that are related to or attributed to improper jobsite conditions. Any splits, cracks, grain raising, checking, edge fracturing, splintering, cupping, crowning/peaking, warping, twisting, expansion/contraction, telegraphing, buckling or chipping that occurs during or after the floor has been installed and as a result of abuse, misuse, improper maintenance or care, exposure to excessive or insufficient moisture, improper installation technique and improper environmental conditions are not covered under the manufacturer's warranty.

Prior to installation of any flooring, the installer must ensure that the jobsite and subfloor meet the requirements of these installation instructions. All necessary accessories, including trim, must be present at the jobsite *prior* to beginning installation. The manufacturer is not responsible for flooring failure resulting from unsatisfactory jobsite and/or subfloor conditions.

When purchasing flooring, we recommend adding 5%-15% to actual square footage needed for cutting allowance and to compensate for culled material. It is acceptable that up to 5% of material be outside the range of acceptance and not be considered defective.

It shall be the responsibility of the Installer to document installation date, product SKU and lot information, duration of product acclimation, flooring moisture content, subfloor moisture content, site relative humidity and site temperature. This information must be documented by the installer and a copy provided to the property owner to ensure product warranty coverage.

Failure to follow any and all of the manufacturer's recommended installation guidelines will void warranty coverage.

Jobsite & Pre-Installation Guidelines

WSPC flooring should be one of the last items installed for any new construction or remodel project. All products must be installed per the manufacturer's guidelines. For any questions or specifications not specifically outlined herein, please contact the manufacturer.

- All "wet" work – i.e. – paint, drywall, concrete, masonry, plumbing must be complete and dry prior to the delivery of WSPC flooring.
- Gutters and downspouts should be in place and the exterior grade complete to allow for proper drainage of water away from the building's exterior perimeter.
- Flooring should not be exposed to extremes of humidity or moisture and products must be installed using an appropriate moisture barrier or retarder.
- HVAC should be on, operational and maintained between 60 – 80 degrees with a relative humidity of 35%-55% range a minimum of 5 days prior to delivery, during and after installation of the flooring.
- If HVAC is not possible at time of installation the environmental conditions must be at or near normal living conditions between 60 – 80 degrees and at the average yearly relative humidity for the area.
- Test wood subfloors for moisture content using moisture meter recommended for wood flooring, such as Ligomat SDM or comparable. Take readings of the subfloor (minimum of 20 readings per 1000 sq. ft.) and average the results.
- Test the concrete subfloors moisture content by calcium chloride testing or by using an appropriate moisture meter. The moisture content for concrete subfloors registered after a calcium chloride test should not be greater than 3 pounds per 1000 square feet of area. If it exceeds these limits, DO NOT install the flooring. Before moisture testing begins, the slab must be cured for a minimum of 30 days. The moisture vapor emission rate for concrete subfloors must not exceed 75% RH using ASTM 2170 or 3 pounds per 1000sqft per 24 hours using Calcium Chloride test ASTM 1869. If using a moisture meter, please refer to the recommended guidelines set forth for by that moisture meter's manufacturer.

ALWAYS CHECK MOISTURE LEVELS BEFORE INSTALLING

Preparing and leveling the subfloor:

1. The subfloor needs to be structurally sound; do not install over particle board.
2. The subfloor should be free of any surface defect. If it is not, fill gaps with a Portland-based leveling cement (for concrete floors only) or sand/grind down any uneven areas. For wood floors, use a wood leveling patch or skim coat as needed.
3. The subfloor must be level and flat to 3/16" (5mm) per 10' radius or 1/8" (3.2mm) per 6-foot radius.
4. Any gaps in the subfloor should not exceed 3/16" (5mm).
5. Use flooring screws into floor joists if necessary to minimize squeaks in subfloor.
6. The surface must be clean and free of any contaminants such as wax, paint, grease, dust, oil, nails, staples, old adhesive, etc. and thoroughly swept and free of all debris.
7. For concrete installation, ensure that the concrete is not low-density (below 3000 psi) or gypsum based.
8. Plywood must be CDX-rated at least 3/4" thick. OSB must be 3/4", PS2 rated, and installed sealed-side down.
9. Moisture content should not exceed 12%.

Acceptable Installation Methods	
Above Grade	Float
On Grade	Float
Below Grade	Float

Existing Floors

Installation over existing floor requires the installer to consider potential issues related to moisture damage, adhesive failure and fastener failure. Contact the adhesive and fastener manufacturers respectively for their specific instructions, recommendations and requirements.

Acceptable floor coverings include: Solid wood, linoleum (1 layer only), terrazzo, ceramic, and stone tile. Tiled floors with grout lines will require a cementitious leveling compound to fill any grout lines, voids, or cracks.

Unacceptable floor coverings include: Carpet (any type), cushioned-back vinyl, laminates, free-floating floors, and wooden floors over concrete.

Recommended Installation Area

This product is not suitable for any outside use, sunrooms/solariums, shower/tub, saunas, seasonal porches, camping trailers, boats, RV's or rooms that have a potential of flooding. Do not install in rooms or homes that are not temperature controlled.

Exposure to long term direct sunlight can cause damage to your floor. Failure to properly shade or UV tint windows can discolor, fade, or buckle planks. Use window treatments or UV tinting on windows. WSPC planks are not intended for use on stairs or vertical surfaces. Do not nail, screw or fasten to substrate. Install cabinetry, island and peninsula counters, vanities, tubs, and showers first. Then install planks around them.

Inspect the Flooring

Inspect material for color, finish, milling, texture and grade. Set aside pieces that may not be acceptable once installed. *The floors have been thoroughly inspected during the manufacturing process, but it is the responsibility of the installer/homeowner to do final inspection and cull-out boards that are not acceptable before installation.*

Acclimation

- Store this flooring at the installation area before installation to allow the flooring to acclimate and adjust to room temperature and humidity.
- Do not open or remove product from cartons during acclimation.
- Do not store directly on concrete or near outside walls.
- Flooring should be kept in the location of install and stacked in an alternating pattern allowing sufficient space for air to circulate.
- Do not install the flooring until the moisture content of the subfloor where the flooring will be installed is within 2% for planks greater than 3" wide and 4% for planks less than 3" wide from the moisture content of the flooring.
- Minimum acclimation time is 72 hours. The manufacturer recommends 7-10 days acclimation time for optimization.
- If you do not allow the flooring sufficient time to acclimate and the moisture content of the flooring exceeds that of the subfloor, the flooring will continue to contract after installation and gaps may develop between the flooring. Likewise, if the moisture content of the flooring is less than that of the subfloor, the flooring may expand and/or cupping may develop.

Blending of Cartons

To achieve a uniform appearance across the entire floor, we require that you open and work from a minimum of four cartons at a time and lay out the flooring ahead of time. Be sure to mix the planks for the best aesthetic appearance. Make certain the room is well lit to ensure color is consistent and that any visual defects can be seen and removed prior to installation. "Racking the Floor" is essential to achieve a random appearance. As you continue working across the floor remember to maintain a six-inch minimum space between the end joints. Randomly install different lengths to avoid a patterned appearance. Never waste materials; the end cuts from starter rows should be used at the opposite side of the room to complete rows or may be used to start the next row.

Undercut Door Casings

Undercut all door casings 1/16" higher than the thickness of the flooring being installed. To do this, use a scrap piece of flooring as a guide. Lay it on the substrate and cut the casing with a handsaw or use a power jamb saw set at the correct height. Failure to undercut casings will result in automatic void in warranty coverage.

Expansion Space

An expansion space of 1/2" must be left around the perimeter of the room and at *all* vertical obstructions. More or less spacing may be needed depending on the geographical region, interior climate, and or time of the year. Your WSPC flooring WILL move/shrink/expand. This is a normal occurrence of flooring products.

Coordinating Transition Moldings

Always have all necessary transition moldings on site *prior* to beginning installation. Make sure all transitions and moldings have been coordinated with planks that have similar color and graining. Set them aside for use when a transitioning is necessary. The manufacturer cannot be held liable for color variations that may exist between flooring and coordinating trim accessories under any circumstances.

We require any installation of this floor that is installed in the *floating* method to use a T-Molding once the installation has gone more than 35 feet in any single direction. Installations of the flooring beyond this distance must use a T-Molding to release stress from the floor and allow the floating installation to properly expand and contract. T-moldings are also required in narrow flooring areas 36" or less in width; floor areas interrupted by wall sections extending out of the wall, including cabinets; floor areas which are not rectangular; wall openings-with or without a door; L shaped rooms or otherwise not rectangular rooms will require T-moldings to split into rectangular sections. Failure to use appropriate T-moldings will void warranty coverage.

Underlayment

Underlayment should be used in any floating installation and be no more than 3mm in thickness (cork products up to 1/2"). We approve the use of 2-in-1 underlayment with attached poly-backing for moisture protection. Foam, Cork, Rubber, EVA and similar underlayments are acceptable. Please contact our technical department for specific product compatibility.

Floor Protection During Construction:

Always protect the surface of the installed flooring during construction. Cover the floor with quality rosin paper or other paper that will allow the floor to breathe and secure it to the baseboards; Never tape directly to flooring. Do not use plastic or polyethylene sheeting to cover the floor since they will trap moisture that will damage the flooring. The flooring must be cleaned and completely free of any and all debris to minimize damage.

If you have any questions regarding installation of flooring not addressed in our guidelines, please contact our technical department.

GENERAL INSTALLATION TOOLS

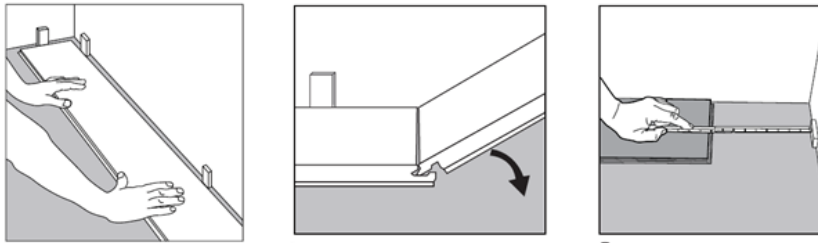
- Moisture Meter
- Tape Measure
- Pencil
- Chalk Line
- Hand Saw or Power Saw
- Utility Knife
- Tapping block
- Crow Bar or Pry Bar
- Wood or Plastic Spacers (¼")
- Hammer or Rubber Mallet

FLOATING INSTALLATION INSTRUCTIONS

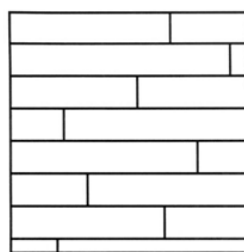
Step One - Establish a Starting Point

- 1.1. Remove any existing wall base, shoe molding, quarter round or doorway threshold.
- 1.2. Prior to installing flooring, roll out 6mil poly-film with seams overlapped 8". Fasten seams every 18" -24" with duct tape or poly tape. Run the outside edges of film up the perimeter of wall 4" (trim after flooring installation is complete).
 - 1.2.1. *If installation is above grade, poly-film is recommended but not necessary.*
- 1.3. Determine the longest, straightest wall to begin installation; this is usually an exterior wall.
- 1.4. Measure the total width of the flooring (including the tongue), plus ¼" for expansion. Measure out this distance in at least 2 places from the starting wall and 12" from the corners. Then, snap a chalk line parallel to the starting wall.

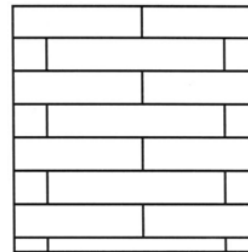
Step Two - Lay Out



- 2.1. Choose the longest and straightest boards and align the plank's tongue with the working line. Cut the last plank to the proper length leaving a ¼" from the end wall. Repeat this step for the second row, making sure to stagger the joints. The minimum end stagger is 6 inches.



Stagger End Joints

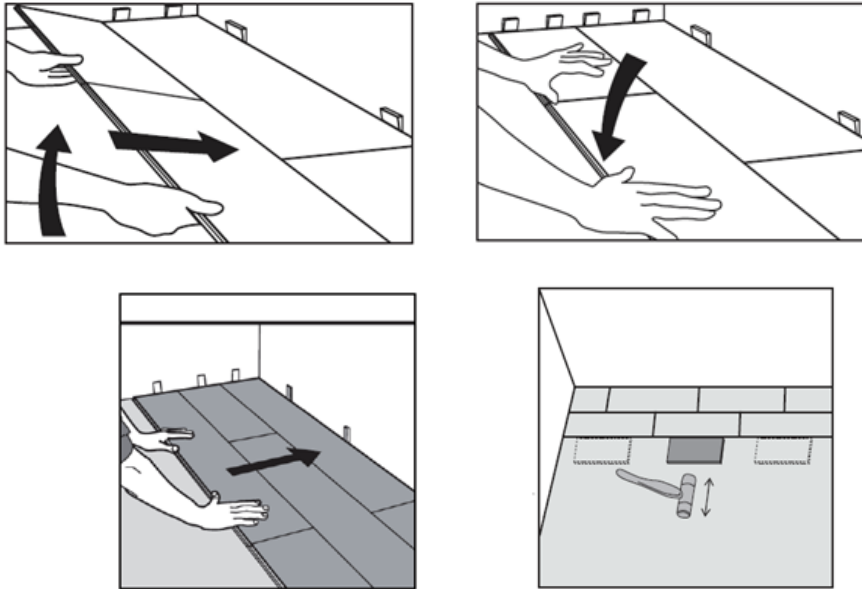


Avoid "H" Joints

Step Three – Rack the Floor

- 3.1. Once the first row is in place, continue to lay out the planks. Remain working from at least four open cartons. Be sure to blend the planks and stagger the end joints a minimum of 6" apart to ensure a favorable appearance.

Step Four - Installation of Flooring



- 4.1. Once enough of the planks have been racked out, begin installing the planks by fitting the short side of the click system into the long side of the click system. Make sure that the click system is engaged evenly, any gapping can compromise the integrity of the installation. To ensure a tight fit, use a tapping block and rubber mallet on the long seams and tap down on the top of the plank at the short seams. Continue installing planks across the room ending at the far wall.
- 4.2. It may be necessary to rip the last row to allow for the $\frac{1}{4}$ " expansion. If the last row is 2" or less click the pieces to the last full uninstalled row and install them together. If needed, use a light rubber mallet to make the remaining rows tight to the installed planks.

Step Five - Completing the Job

- 5.1. Clean the floor with a prefinished hardwood cleaner such as; Bona®, Woodwise® or Glitsa®.
- 5.2. Install transition pieces -i.e. – stair nose, reducer, end cap, t-molding and base shoe. Please follow manufacturer's installation guidelines for transitions.
- 5.3. Inspect final floor for nicks and or minor gaps – fill with appropriate color wood putty/filler.
- 5.4. Complete Warranty Registration Form.
- 5.5. Any unused material should be stored in a dry place in case future repairs are needed. We recommend saving at least 2 boxes.